

# MONITOR

commode chair

The Monitor can be mounted on top of a toilet or used as a portable accessory with a bucket. The legs are height adjustable, with 8 different height settings in 2.5 cm steps, so also suitable for taller users recommended for people weighing up to 160 kg.



# MONITOR

commode chair



## Features

Comes with armrests.

The armrests are bent forward for better support.

Comes with a bucket, lid and splash shield.

One of the legs is provided with a fine-adjustment foot for stability on uneven floor.

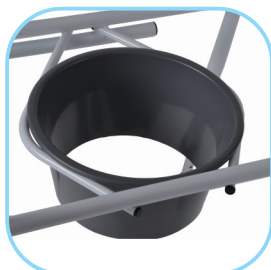
The seat height adjustment to 8 different positions from 44-64 cm with 2,5 cm steps by the use of snaplock clips. So it is suitable also for tall users.

## Spare parts:

- Bucket + lid
- Splash shield
- Lid + commode ring
- Legs (4 pcs)
- Fine-adjustment foot (1pc)



Fine-adjustment foot



Splash shield

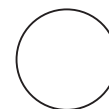


Bucket + lid



Bucket

## Colour:



white



grey

## Technical Information:



Max. user weight:  
160 kg

Seat height (adjustable):  
48-66 cm (2,5 cm steps)

Outside dimensions of ring: 35 x 42 cm

Inside dimensions of ring: 20,5 x 25 cm

Width between arms: 49 cm

Overall width: 54 cm

Weight: 6,35 kg

### Material:

Powder-coated rust proof  
steel frame, polyurethane  
plastic parts.

Item no.: COMG1001

Monitor is **CE** - marked and fulfills the requirements of EU directive 93/42 EEC for medical devices